

# Benefits of Polyurethane Concrete Raising



**Cost Effective:** concrete raising is typically about half the cost of replacing the same concrete. Ultimately, the cost of raising or stabilizing concrete is a direct reflection of how much leveling material the project will require.



**Time:** Ready to use immediately! You can drive on, walk on, and play on it the same day!



**Clean Work Environment:** No concrete or grout splatter and no wash down needed. No heavy equipment will drive through your lawn and disrupt your landscape.



**Smaller Holes:** Polyurethane concrete raising drills a nearly invisible 5/8 inch hole and the process calls for considerably fewer holes than traditional mudjacking; Minimal patchwork needed.

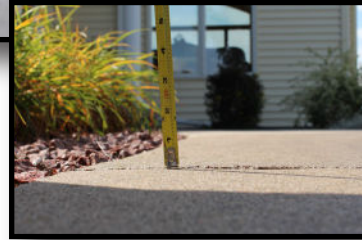


**Lightweight:** This material will never lose its density, is permanent and weighs only 2lbs. per cubic foot. Compared to traditional Mudjacking material, which weighs on average of 100lbs per cubic foot.



**Green:** HMI foam is the top-of-the-line eco friendly material, Every time concrete is raised, we are saving concrete slabs from landfills by raising versus replacing concrete!

## Before & Afters



FOUNDATION™  
**WERKS**

Don't Replace It,



Before

Raise It!



After

Call for a FREE ESTIMATE

📞 800-464-9684

🌐 [foundationwerks.com](http://foundationwerks.com)

## What We Raise

All solid slabs of concrete can be raised & stabilized. Gravel areas, blacktop and pavers sitting in sand can not be raised but the soil underneath can be stabilized with Deep Foamjection™. Slabs of concrete that are badly cracked may be too damaged to lift.



Void Fill



Driveways



Sidewalks



Porches & Stoops



Interior Floor Slabs



Pool Decks & Patios

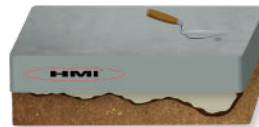
## How It's Raised

Most concrete raising jobs will take a few hours –start to finish–and your concrete will be ready for use immediately upon completion! Polyurethane concrete raising uses a foam material that is injected under the slab. When the components of this material are mixed, a reaction causes the material to expand. This expanded foam fills any voids beneath the slab and raises the concrete. This material will never lose density, is permanent and weighs only about 2 lbs. Per cubic foot.



Drill.

Pump.



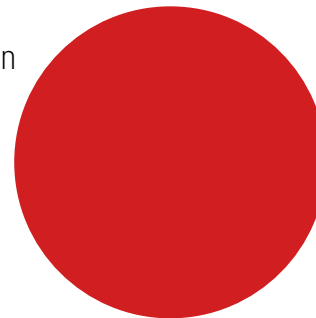
Patch.

### Hole Size

actual size comparison



Polyurethane Concrete Raising



Mudjacking

## Testimonials

**If you don't take our word for our TOP QUALITY service.. read what others have said!**



I was very impressed at how knowledgeable and helpful your work crew was. They addressed all of my questions and concerns! We appreciate the hard work and time completing my garage floor.

**-Kevin C.**

Thank you very much for the great work your crew did, very nice guys to work with. We would recommend your work to anyone.

**- Dan W.**

Thank you for all the time and your hard work to schedule my patio into the schedule, it was very much appreciated. I will definitely recommend your company to others.

**- Sally K.**



## Foam Lifts & Levels Instantly

